

- Solve and graph the solution set on a number line: $f(x) = (x-7)(x-2) < 0$

GRAPHICAL APPROACH...

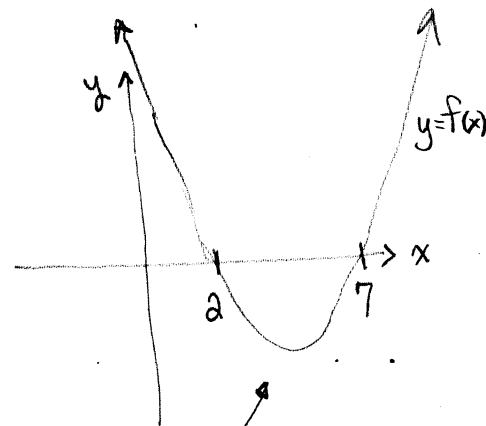
Zeros: $x=7$ mult 1

$x=2$ mult 1

Leading term: x^2

End behavior: Up LEFT / Up RIGHT

Graph looks roughly like

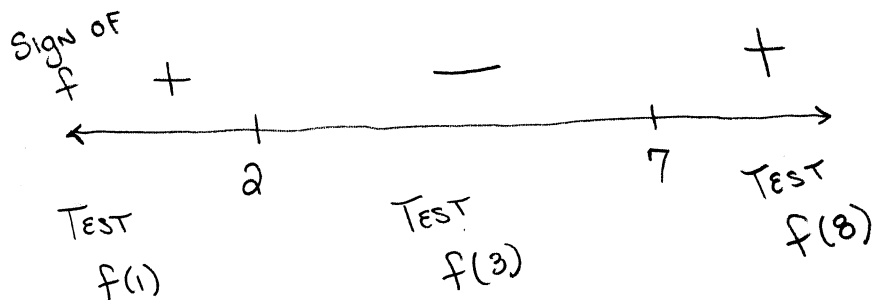


$f(x) < 0$
on $(2, 7)$

SIGN CHART APPROACH... $f(x) = (x-7)(x-2)$

Zeros: $x=7$

$x=2$



$f(x) < 0$ on $(2, 7)$

USE EITHER APPROACH!