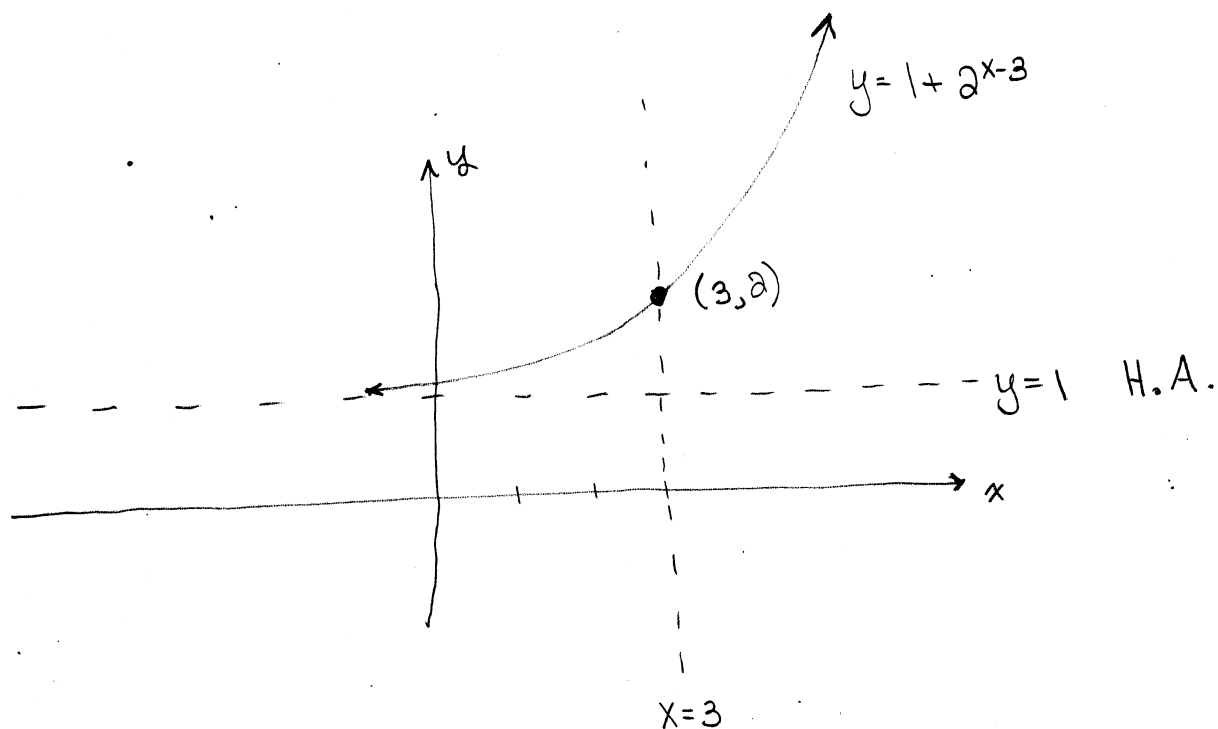


- Discuss the graph of $y = 1 + 2^{x-3}$.

THE GRAPH OF $y = 1 + 2^{x-3}$ IS THE GRAPH OF
 $y = 2^x$

① SHIFTED 3 UNITS RIGHT, AND

② SHIFTED 1 UNIT UP.



THE OLD y -INTERCEPT MOVES TO $(3, 2)$.

THE OLD H.A. MOVES TO $y = 1$.