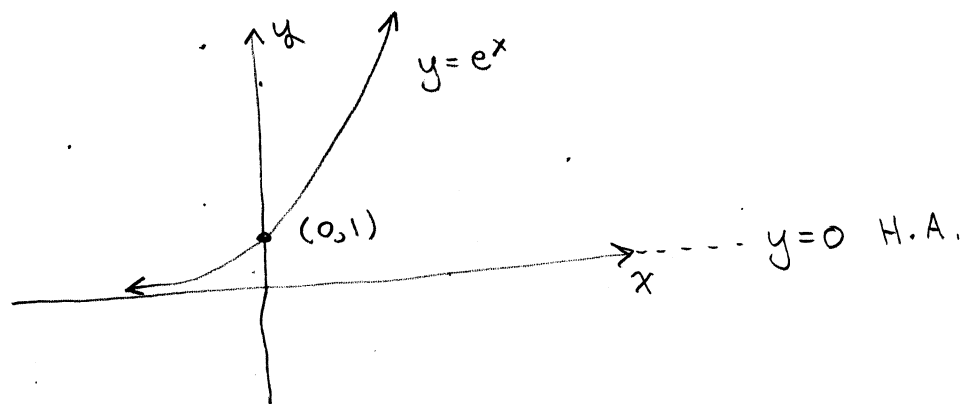


- ① Discuss the graphs of $y = e^x$ and $y = e^{-x}$.

① Since $e > 1$, THE GRAPH OF $y = e^x$ LOOKS LIKE



THE NEGATIVE X-AXIS IS A HORIZONTAL ASYMPTOTE.

② FLIP THE GRAPH OF $y = e^x$ ABOUT THE Y-AXIS TO GET THE GRAPH OF $y = e^{-x}$...

