

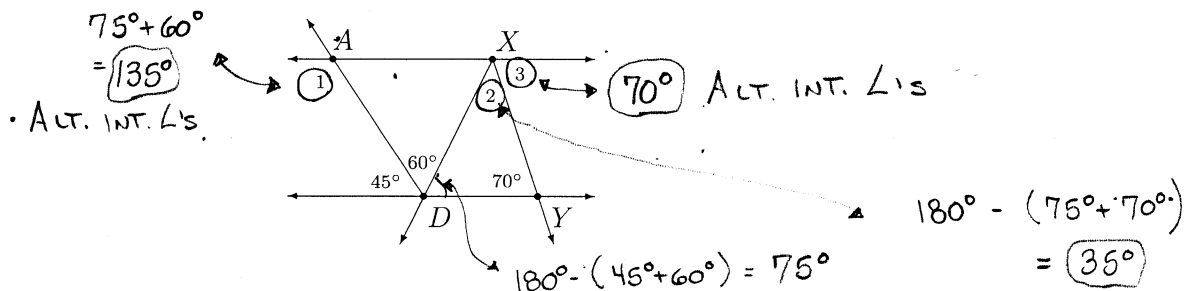
Math 206 - Quiz 9

April 25, 2018

Name key Score _____

Show all work to receive full credit. Supply explanations when necessary.

1. (3 points) Given the figure shown below with $\overleftrightarrow{AX} \parallel \overleftrightarrow{DY}$, find each of the following:

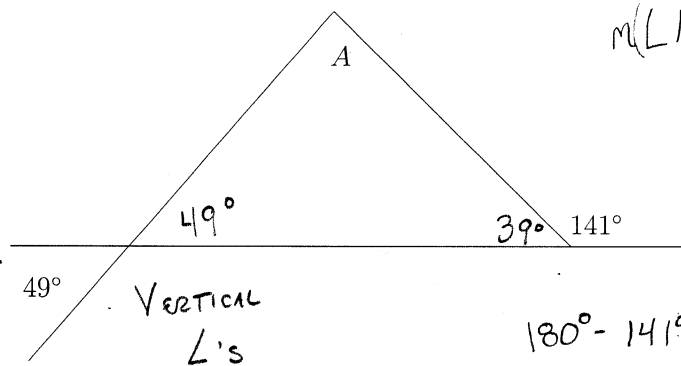


(a) $m(\angle 1) = 135^\circ$

(b) $m(\angle 2) = 35^\circ$

(c) $m(\angle 3) = 70^\circ$

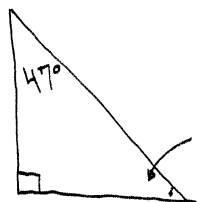
2. (1 point) Find the measure of $\angle A$. Briefly explain your reasoning.



$m(\angle A) + 49^\circ + 39^\circ = 180^\circ$
 $\Rightarrow m(\angle A) = 92^\circ$

$180^\circ - 141^\circ = 39^\circ$
 Supplementary L's

3. (1 point) One of the interior angles of a right triangle measures 47° . Find the measure of the other acute angle.



$90^\circ - 47^\circ = 43^\circ$