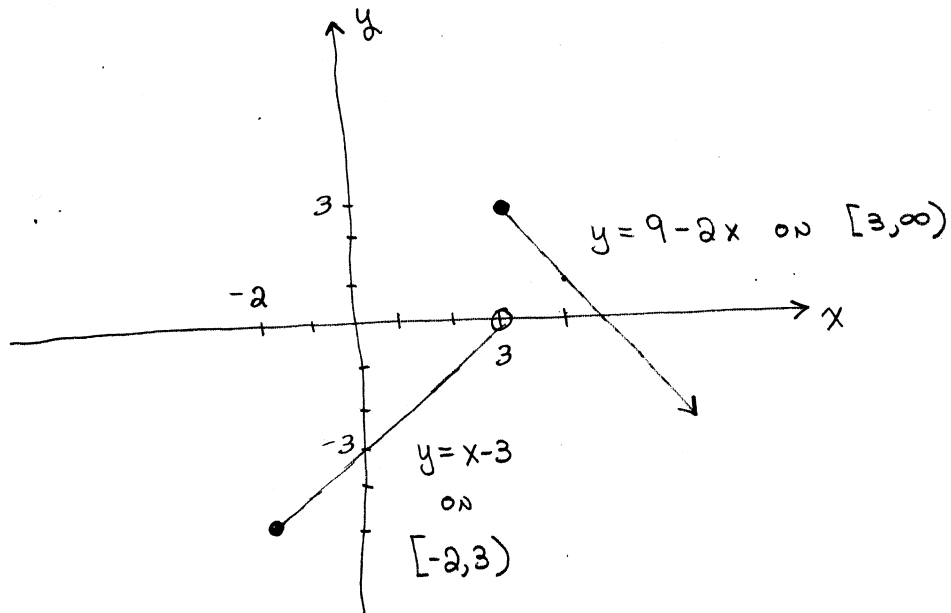


- Sketch the graph of f :

$$f(x) = \begin{cases} x-3, & -2 \leq x < 3 \\ 9-2x, & x \geq 3 \end{cases}$$

Try graphing AT [desmos.com](https://www.desmos.com).

THE SYNTAX IS $y = \{-2 \leq x < 3 : x-3, x \geq 3 : 9-2x\}$



NOTICE THAT f IS DISCONTINUOUS AT
 $x = 3$.

THE PIECES DO NOT CONNECT.