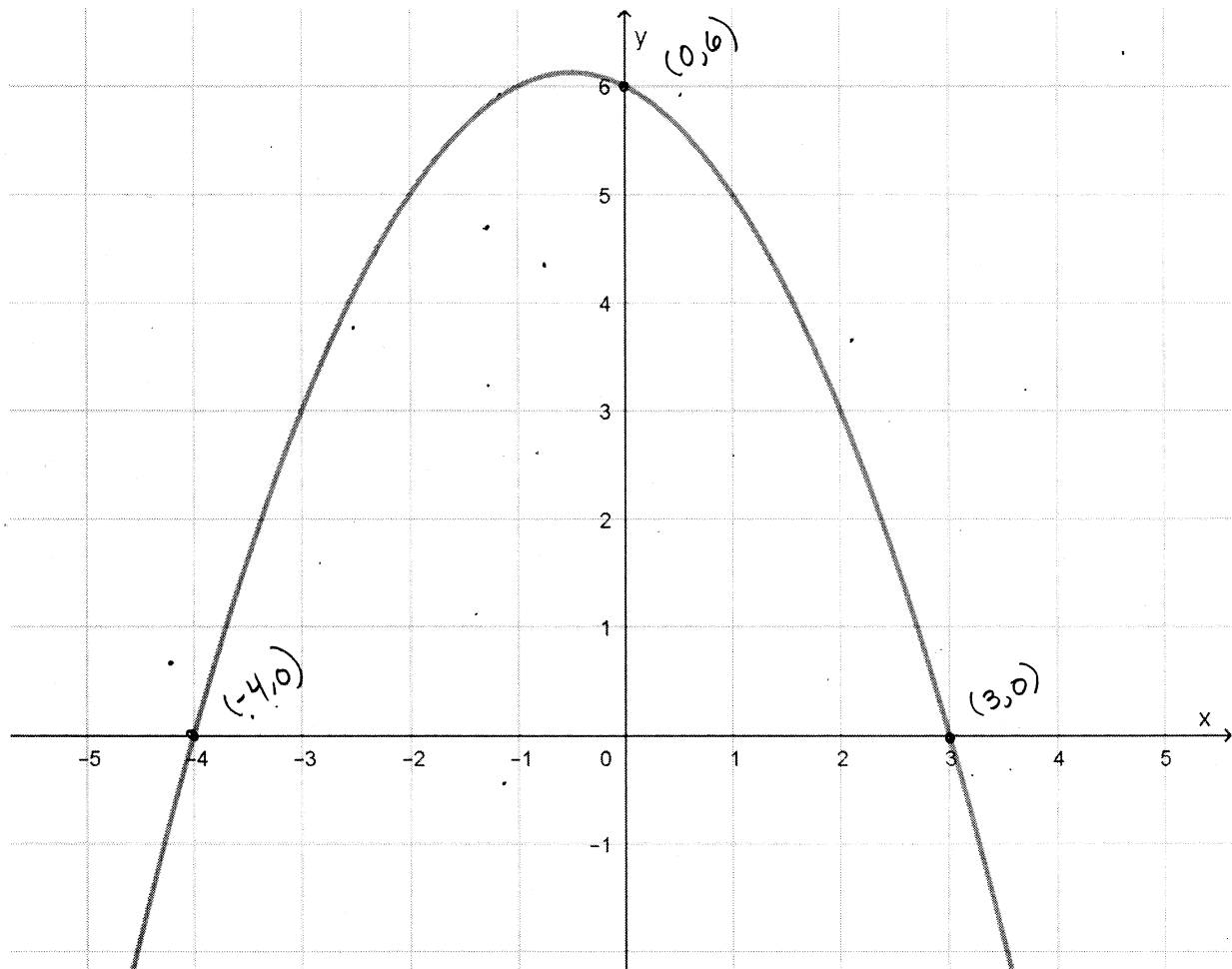


- The graph of a parabola is shown below. Find an equation for the graph.



BECAUSE THE X-INTERCEPTS ARE $(-4, 0)$ AND $(3, 0)$,

THE EQUATION MUST LOOK LIKE

$$f(x) = a(x+4)(x-3)$$

ALL WE MUST DO IS FIND a , AND WE CAN DO SO USING

$$f(0) = 6 \dots$$

$$f(0) = 6 = a(0+4)(0-3) = 30a \Rightarrow a = \frac{6}{30} = \frac{1}{5}$$

$$f(x) = \frac{1}{5}(x+4)(x-3)$$