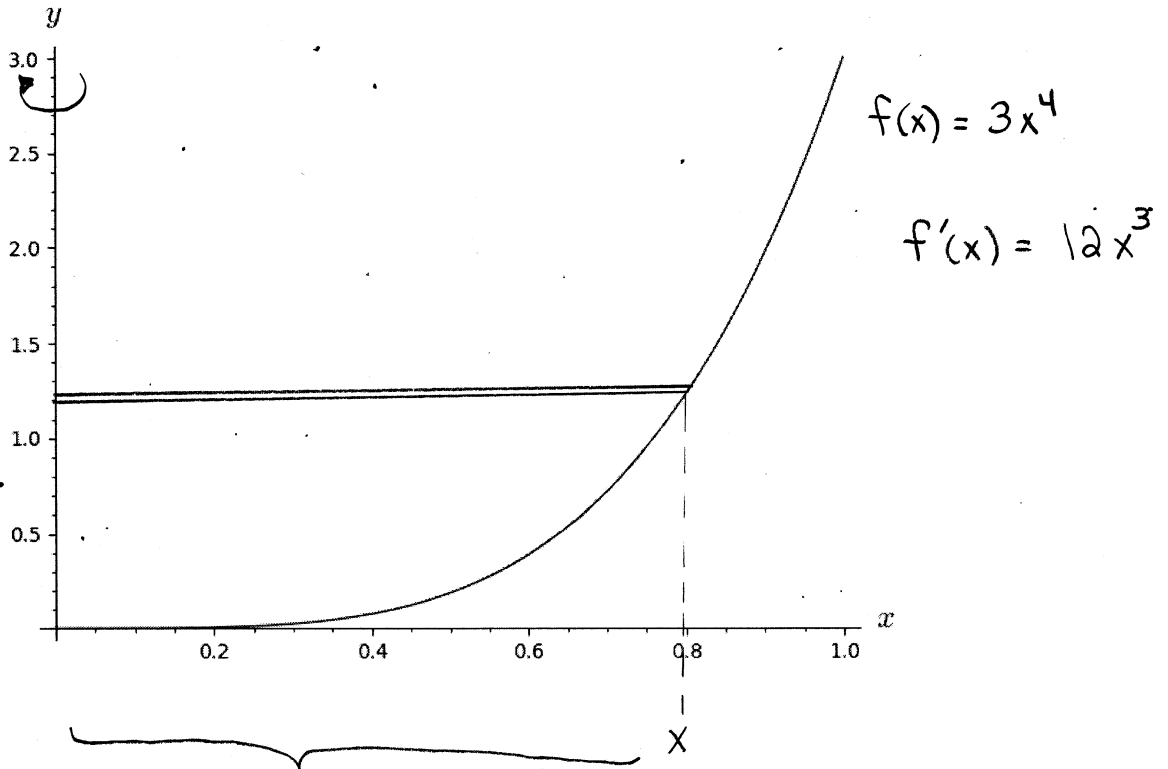


Example

The graph of $y = 3x^4$ from $x = 0$ to $x = 1$ is rotated about the y -axis. Find the surface area of the region that is generated. Use technology to evaluate your definite integral.

Solution



THIS DISTANCE AT X IS SIMPLY X .

$$\text{SURFACE AREA} = 2\pi \int_0^1 x \sqrt{1 + (12x^3)^2} dx$$

$$= 2\pi \int_0^1 x \sqrt{1 + 144x^6} dx$$

TECHNOLOGY

$$\approx 15.8264$$