

Math 131 - Quiz 2

January 23, 2023

Name _____

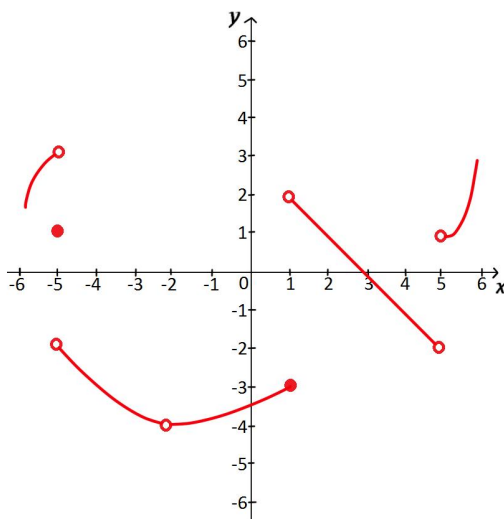
Score _____

Show all work to receive full credit. Supply explanations when necessary.

1. (4 points) Use a table of values to show that the limit does not exist. Your table must show function values at four or more points.

$$\lim_{x \rightarrow 0} \frac{|x|}{x^2 + 4x}$$

2. (6 points) The graph of $y = f(x)$ is shown below. Use the graph to estimate each limit or explain why the limit does not exist.



(a) $\lim_{x \rightarrow -6} f(x)$

(b) $\lim_{x \rightarrow 1} f(x)$

(c) $\lim_{x \rightarrow 3} f(x)$